



Capabilities

Over the air device software and configuration updates

Support remote site wireless devices from a centralized location

Support multiple device types simultaneously

Lower Total Cost of Ownership for Mobile Devices

Enterprises are rapidly deploying mobile computing devices to improve operational efficiencies. As a result, IT organizations are challenged with effectively supporting this emerging mobile installed base and containing the potentially high support costs which can run much higher than the cost of purchasing the devices. Wavelink Avalanche™ seamlessly configures mobile devices and synchronizes software across wireless networks from a single, central console.

Synchronize Software "Over-the-Air"

Avalanche consists of two main components: the Avalanche Enabler, which runs on each wireless device, and the Management Console. Once Avalanche Enablers are loaded onto your mobile devices, all subsequent changes to device software, utilities, firmware, radio drivers and configuration parameters can be performed wirelessly from the Management Console.

Maximize Device Uptime

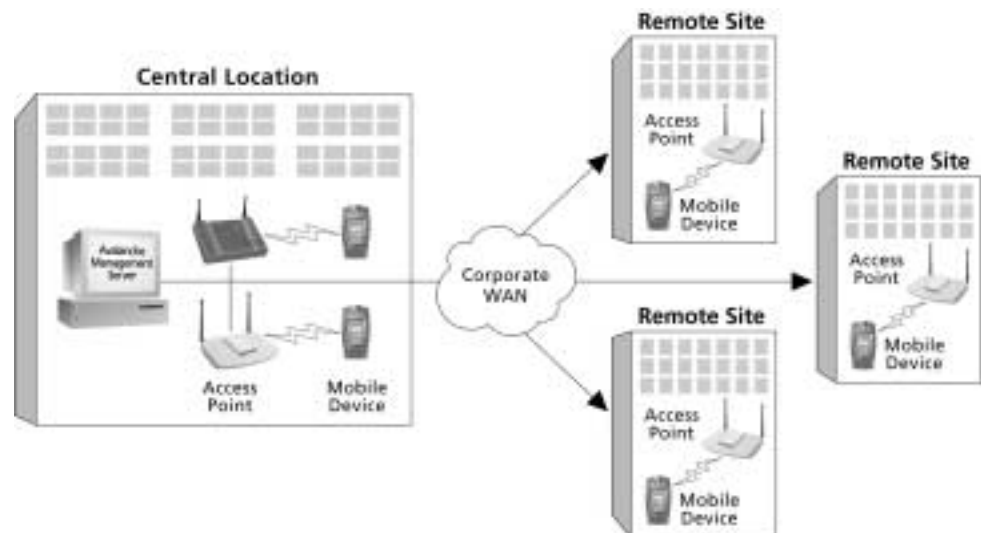
With Avalanche, software updates or device configuration changes are automatically downloaded over the wireless network directly to each device. Avalanche eliminates duplication of effort and frees you from the manually intensive processes of updating devices through cradle or serial connections. Because your devices are out in the field, you're reducing downtime and the high-variable costs that consume IT resources.

Support Remote Sites

In addition to supporting wireless devices on a wireless local area network (LAN), Avalanche supports your installed base of devices at remote sites over a (WAN) connection. This eliminates the need to travel to remote locations to change device parameters or perform device software and firmware upgrades.

Configure and Support Multiple Wireless Devices

Avalanche supports the broadest range of device platforms including DOS-based devices, Palm OS®, Windows® and Windows CE/Pocket PC devices.



AVALANCHE



View all available software packages and configuration options in Tree View

Summary View displays information about any selected object

List View shows information for devices within a similar management group

Get detailed information on any device. Check the status of a device, contact or "ping" a device and even send a text message to a device user



System Requirements

Management Console

- Any 32-bit Windows® platform (95/98/NT/2000/ME)
- TCP/IP network protocol stack
- RS232 serial port and/or RS232 digiboard port
- 20 MB available disk space

Devices Supported

- Windows PCs, Windows 95/98/2000/NT 4.0
- Windows CE/Pocket PC devices
- Symbol series 3000/6000
- Symbol 1740/1742 Palm OS-based
- Symbol series 7000 DOS/Windows CE-based
- Symbol 2740, 2746, 2842, 2846, & 8142, 8146 Windows CE-based
- Symbol 7942/7946 Vehicle Mounted

Note: The available disk space requirement does not take into account disk space required for the specific application and firmware that will be loaded onto the devices.

Features Benefits/Description

Centralized GUI-based management

Manage all aspects of device configuration. Administer all functions from the Management Console, from synchronizing software versions to configuring network and device parameters through Avalanche's intuitive GUI.

Flexible software collections

Assign different software/firmware profiles to different devices. Avalanche delivers the flexibility to define different software collections, which contain combinations of software applications, support packages, utilities, etc. These software collections allow you to assign different software/firmware profiles to devices based on device manufacturer, model, and device-specific attributes such as keyboard style and network parameters.

Selective updates

Eliminate unnecessary traffic. While performing software and firmware updates, Avalanche only downloads the components that have changed to the device.

Push/Pull Mode software updates

Conveniently schedule updates. Software updates occur in one of two modes: (1) Push Mode for Management Console-scheduled updates at convenient times such as off-peak hours, and (2) Pull Mode for updates triggered by the device end-user as needed.

Bandwidth management

Control network usage during updates. The Avalanche Management Console can specify the maximum number of simultaneous device updates. The Console will update all devices in increments so the simultaneous device limit is not exceeded.

Site profiles

Easily define site-specific configurations. Avalanche allows profiles for different sites in the enterprise that may require different software packages, IP configurations, and so on. This is useful when a mobile Management Console is used on a laptop PC across varying site locations.

Text messaging

Send messages. Using the Management Console, Avalanche can send text messages to specific wireless devices for instant communication with device end-users.



www.wavelink.com

11332 NE 122nd Way, Suite 300
Kirkland, WA 98034 USA
1.888.697.WAVE