



Capabilities

Turn wireless LAN access points into “plug-and-play” devices

Detect and resolve potential wireless LAN network issues

View your entire wireless LAN network topology and status from a single location

Prevent unauthorized users from accessing corporate LAN resources

Gain Instant Visibility and Control of Wireless LAN Networks

Wavelink Mobile Manager™ solves wireless network management challenges by offering robust visibility and control over wireless LAN network components (access points).

We offer the only solution that supports multiple access point (AP) vendors (including Symbol, Nortel, 3COM, Cisco, Ericsson, and Intel) as well as integration with existing enterprise network management systems (Openview, Unicenter, and Tivoli).

Rapidly Deploy Enterprise-wide Wireless LANs

With Mobile Manager, enterprises can automatically discover and configure APs straight out of the box—even at remote site locations—eliminating manually intensive and repetitive tasks. Once an AP is connected to the network, Mobile Manager instantly detects it and automatically distributes pre-defined configuration parameters such as the IP address and wireless ESS ID. You save a considerable amount of time to better utilize technical talent.

Easily Perform Ongoing Maintenance

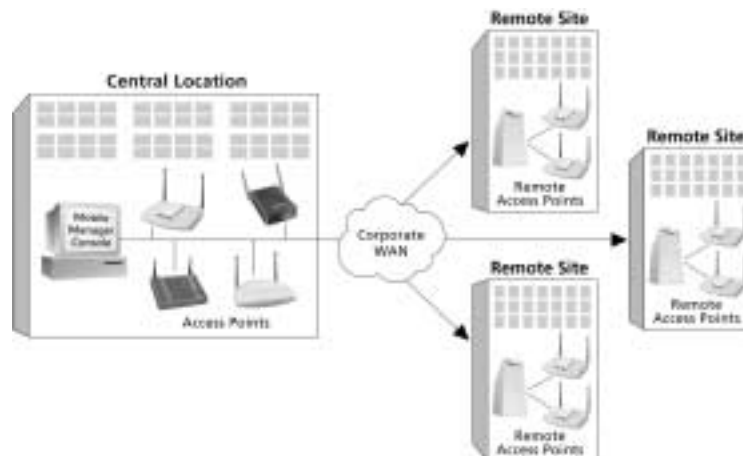
Mobile Manager automatically sounds alerts for problems and/or changes in network conditions, before end users are affected. You set defined network performance parameters for possible degradation, failure conditions, and functions such as addition or removal of an AP, and whether alerts are forwarded to e-mail, a pager, or to your existing systems management console.

Centralized Wireless LAN Management

Through a wide area network and a single management console, you can view the topology of the entire wireless network and perform all installation and maintenance functions for remote site wireless LANs just as you do for local wireless LANs. From a single management console, you can view network traffic on a packet-by-packet basis and view the status of any device.

Extend and Enhance Existing Security Measures

Mobile Manager also offers the first effective mechanism for managing existing wireless LAN security measures and ensuring that only authorized personnel have access to the Administrator Console. Through the use of access control lists, Mobile Manager helps you to specify exactly which locations, or APs, mobile devices can access; propagate changes to large numbers of APs simultaneously; and easily rotate Wired Equivalent Privacy (WEP) keys throughout the entire wireless network.



From a single Mobile Manager Console, you can perform all management functions for both local and remote wireless networks with equal ease.



Mobile Manager Console Provides a Comprehensive Network View

View your entire network from a single management console

Organize your network into regions, enterprise-wide

Get exact status of any device with one click

Alerts are captured in real-time

Network traffic can be viewed on a packet-by-packet basis and filtered by device



System Requirements

Management Console

- Any 32-bit Windows platform (95/98/NT/2000/ME)
- TCP/IP network protocol stack
- Pentium 133 or higher
- 10 MB available disk space
- 32 MB RAM
- NDIS 3.1 compatible network adaptor or higher

| Features | Benefits/Description |
|------------------------------|--|
| Agent-based administration | Automatically recognize new access points (APs). Actively monitor local network segment for AP multicasts. Mobile Manager uses agents to implement its unique auto discovery technology. Autodiscovery recognizes new APs and creates direct administrative interfaces to each AP on the network. |
| Profile-based configuration | Eliminate the need for technical talent at every AP site. Create templates of configuration settings and then assign one of these templates to specific APs. As a result, update or modify multiple AP configurations simultaneously. New APs that are "plugged" into the LAN network are automatically configured by a definable default profile and immediately become active components of the wireless LAN. |
| Automatic IP assignment | Automatically assign IP addresses to access points. As they are plugged in, Mobile Manager automatically detects APs and assigns them IP addresses from a pool, which can either be manually configured or automatically created from the IP addresses of existing access points. |
| Log files and statistics | Quickly find and fix network problems. Log files and their associated features greatly facilitate the troubleshooting process. View detailed network activity as well as summary statistics in the log files. Maximize the benefits of log files by filtering and searching for the data most relevant to the problem. |
| Configuration file storage | Easily manage and modify parameters. Configuration file storage enables easier management and modification of parameters such as the access control list. Instead of manually re-typing each MAC address into the management console user interface, simply cut and paste an access control list into a configuration file. |
| Automatic alert notification | Instantly be alerted to problems wherever, whenever. Receive alerts automatically via e-mail or pager whenever a network event occurs that is defined as an alert. Alerts include fault conditions, performance warnings and notification of new hardware detection. |
| Network topology | View your entire wireless network in real-time. The intuitive graphical user interface (GUI) provides a view of the entire wireless LAN network and associated network activity across multiple site locations in real-time. Drill down on individual APs and mobile devices for easy problem identification and resolution. |